

# COHILLS®

Building Specialties, Inc

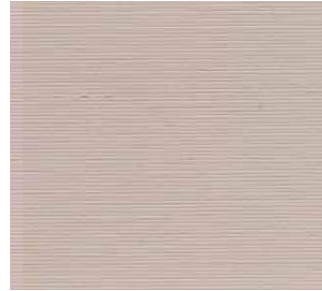
## COHILLS PRO SERIES® COLOR HARDENER



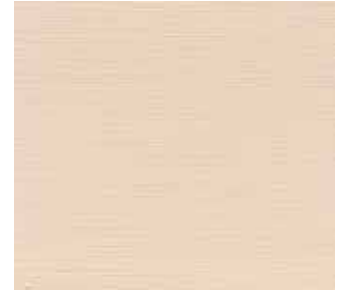
**Glamis Sand**



**Desert Buff**



**Suede**



**Kool Peach**



**Buttercup**



**Carefree Tan**



**Coach House Brown**



**Saddle Tan**



**Gunsmoke**



**Arizona Clay**



**Copper Canyon**



**Sedona Red**

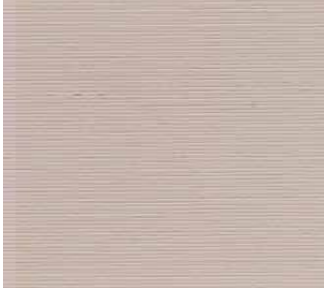


Cohills Pro Series® Color Hardener is a fine blend of graded silica sand, cement and iron oxide pigment. It densifies the surface of the concrete while imparting color and should be applied by the dry shake method.

**NOTE:** It is highly recommended that you do a sample test area before installation. The color samples shown are approximate and represent as closely as possible the appearance of COHILLS PRO SERIES® Color Hardener and Release Agents. The final color of the concrete may not match the colors shown here due to variables beyond our control including finishing techniques, job conditions & curing methods.

\*Refer to Cohills® Technical Bulletin CBS082013 Warranty-Disclaimer-Precautions for additional information.

# COHILLS PRO SERIES® RELEASE AGENT



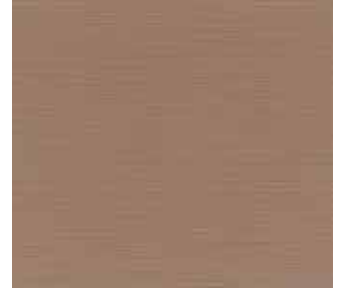
**Suede**



**Carefree Tan**



**Coach House Brown**



**Saddle Tan**



**Caribou Brown**



**Burnt Umber**



**Sedona Red**



**Dark Brown**



**Copper Canyon**



**Rawhide**



**Smokey Gray**



**Gunsmoke**



Cohills Pro Series® Release Agent allows for easy removal of embossing mats. For truly unique projects, a variety of Release colors that contrast with the shade of Color Hardener is recommended.

**Cohills Building Specialties, Inc.®**

**3825 East Anne Street • Phoenix, AZ 85040**

**Phone: 602-266-0462 • Toll Free: 877-709-2220**

**© 2015 All Rights Reserved Cohills Building Specialties, Inc.®**

**[www.cohills.com](http://www.cohills.com)**