

## PRO SERIES CHEMICAL STAIN

This color selector guide is designed to assist you in making your selections for Cohills Pro Series stains on a natural gray concrete substrate and are unique to each concrete surface. Color effects produced will vary when applied over micro-toppings, self-levellers and stampable overlays and may differ significantly from the colors shown here. Color will also vary when applied over different integrally pigmented substrates. Wide variation mottling and unevenness of color should be expected and are normally desired. Modifying the integral color of the substrate can allow individuals to achieve a wider pallet of colors and tones, i.e. a white or light color base will brighten and intensify colors significantly.

Experimentation of colors and application methods is recommended, as the color of the actual product may vary dramatically. Representative test sections must be produced on each concrete surface. Final color approval should be made with actual material and sealer selection; however, variation of even mock-up samples should be expected. To preserve the variegated appearance and protect chemically stained surfaces, it is suggested that all surfaces be sealed with compatible Cohills sealers.

Due to reproduction limitations and the nature of chemically stained concrete, it is necessary that we reserve the right for reasonable variations. Printed colors show approximate color, without affect of curing method and hydration due to environmental conditions, finishing techniques or application procedure. Variaton of light, texture and effects of specific sealers will also affect the final appearance.

3825 EAST ANNE STREET  
PHOENIX, AZ 85040  
PHONE: 602-266-0462  
TOLL FREE: 877-709-2220  
FAX: 602-470-1836

4874 SOUTH WARNER DRIVE  
APACHE JUNCTION, AZ 85220  
PHONE: 480-288-8400  
FAX: 480-288-5705

[www.cohills.com](http://www.cohills.com)

DISTRIBUTED BY:

ATOMIC BLUE



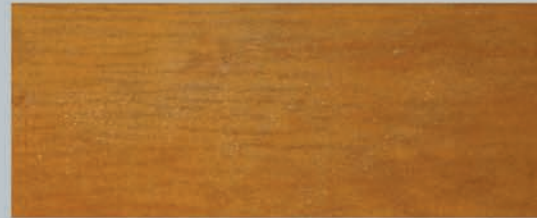
PALM GREEN



AGED BRONZE



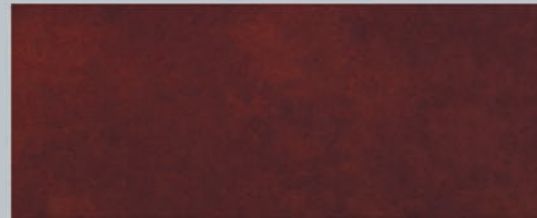
TOASTED  
ALMOND



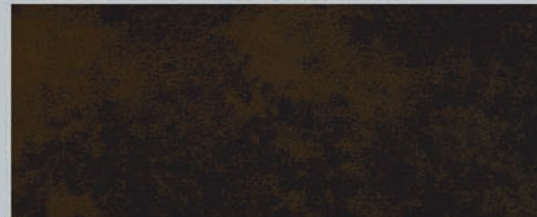
TERRACOTTA  
CLAY



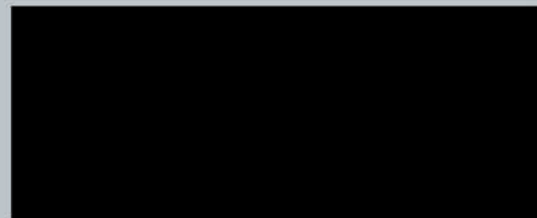
RUSTIC BROWN



ENGLISH  
LEATHER



BLACK



# ACID STAINING CONCRETE: APPLICATION TIPS

## GENERAL

**IMPORTANT: Do NOT ACID WASH OR USE ANY ACIDIC DETERGENTS BEFORE APPLYING ACID STAIN.**

It is always recommended that a small out-of-the-way section of your project be tested to see if the desired reaction occurs. If it does not, you probably have surface contaminants on your slab.

A new concrete slab must have cured for six (6) weeks. The optimum time to stain in a new home is after all construction (taping, bedding, texturing and painting) is completed and just prior to the baseboards being affixed. We recommend that you protect your new slab during the construction phase with plastic, paper, cardboard, plywood or sheet rock covering as the initial cleaning step will be much easier. All laborers should be advised that the slab will be the finished floor.

If scoring is desired, giving the impression of stone or tiles, we suggest that it be done within three to four days after the slab is poured, and we suggest that the scoring groove be no deeper than 1/8 inch. Deeper grooves will collect dirt. Scoring can also be done on older slabs.

## STEP ONE – WASH

Wash the concrete surface, as it must be clean and free of paints, wax, grease, dirt and other surface contaminants. Do not acid wash or use heavy alkali cleaners. Tri Sodium Phosphate (TSP) is an excellent mild all purpose cleaner (available at hardware or janitorial supply stores) and when mixed with water, can be used to clean the slab by scrubbing with a long handled stiff brush and then wet vacuumed (preferred) or damp mopped (several moppings may be necessary) to remove all dirt. After washing, allow the floor to dry completely.

Protect all walls with tape and paper. Do not allow the stain to touch any wood or metal and do not apply tape directly to concrete.

## STEP TWO – STAIN (First Application)

Follow manufacturers recommendation on application of acid stain. Some manufacturers recommend a 50/50 dilution. Experiment with dilutions for varying shades. You can apply the mixture with a brush or sponge, however we suggest that you consider using an all-plastic garden (insecticide) pump up sprayer (no metal parts) as you can control volume much easier.

Make sure all container lids are tight and shake vigorously before using. Put the acid stain in the spray container, close the lid, pump up the pressure and begin randomly spraying the mixture on the floor by holding the nozzle of the wand approximately 18 inches from the floor. Try to avoid precise back and forth motions. You should apply the mixture leaving full moisture, short of puddles. Try not to leave puddles as puddle edges hold more moisture (volume equals depth of color). As you apply the stain, there may be varying degrees of fizzing and there will not be a lot of color. Let the floor dry completely.

Drying time will depend on porosity, temperature, humidity and volume, but it generally takes several hours. Do not walk on the floor while it is wet or damp. Do not remove the residue that is left from the chemical reaction.

Using the same procedure as mentioned above, apply the second application. Again allow the floor to dry completely. You will notice darker tones or color appearing at this time, remember that VOLUME EQUALS DEPTH OF COLOR.

## STEP THREE – WASH

After the floor has completely dried, scrub off the residue using a long handled medium stiff bristle brush and a mixture of water and ammonia. (1 Pint of ammonia to 5 gallons of water.) Remove the water/ammonia and residue mixture from the floor by mop, squeegee or (preferably) a wet vacuum. Repeat process with clean water only until all residue is removed. Allow the floor to dry completely.

## STEP FOUR – SEALER APPLICATION

Determine what type of finish you would like. Solvent based sealers go down clear & dry clear. They tend to bring out more color and leave a bright shine. Water based sealers don't darken the color and leave more of a semi gloss look.

Application is best done with a roller, and two thin coats are recommended. When using water based sealers, make sure to roll out all roller marks. Allow at least 6-8 hours of drying time between coats.

## CONCLUSION

Should you have any questions regarding your acid stain project, we encourage you to call your Cohills Customer Service Representative.

**CAUTION: CONTAINS ACID! USE SAFETY GOGGLES, RUBBER GLOVES AND RUBBER APRON. PLEASE REFER TO ALL PRODUCT TECHNICAL BULLETINS AND MSDS SHEETS PERTAINING TO THE PRODUCTS USED IN YOUR APPLICATION**